



## SwitchKey

Automatically use the correct input source.

Ever hassled by wrong input source when switching application?  
SwitchKey can automatically activate your choice for you.

### Download & Install

#### Manually:

Download (macOS):

Latest < v1.1.3

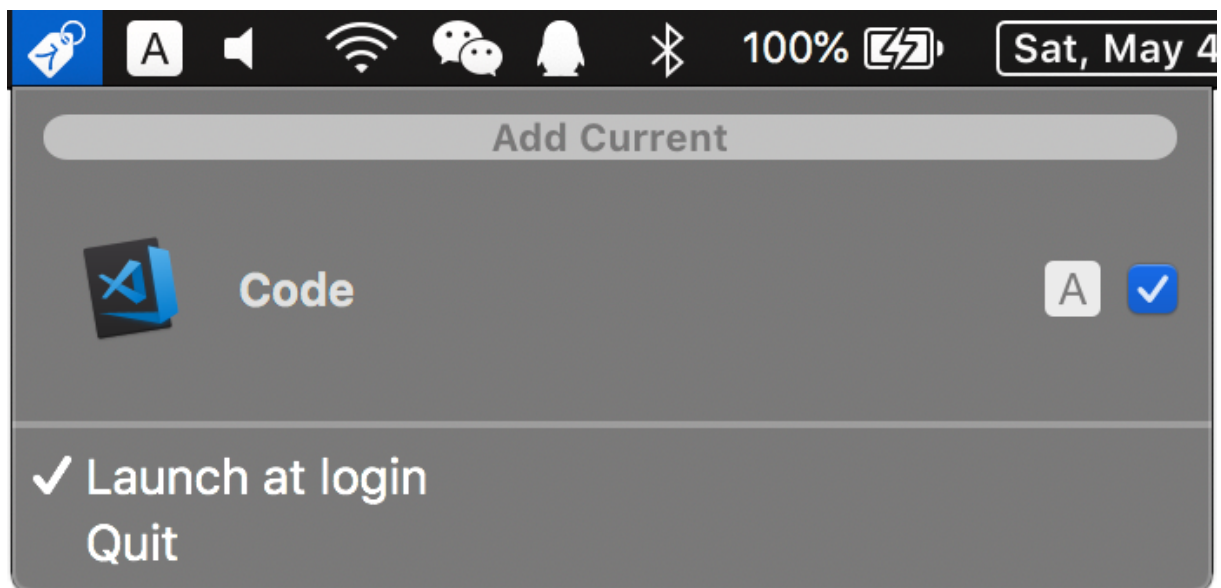
Uncompress, then drag & drop into your Applications folder.

#### Via Homebrew (thanks to @fanvinga):

```
1 brew install --cask switchkey
```

---

## Usage



- Save current input source choice for frontmost application: click “Add Current”.
- Enable/disable automatic switch for saved application: check/uncheck the checkbox on the right.
- Remove saved choice: select the one to be deleted, then press delete key.

Not working? See below.

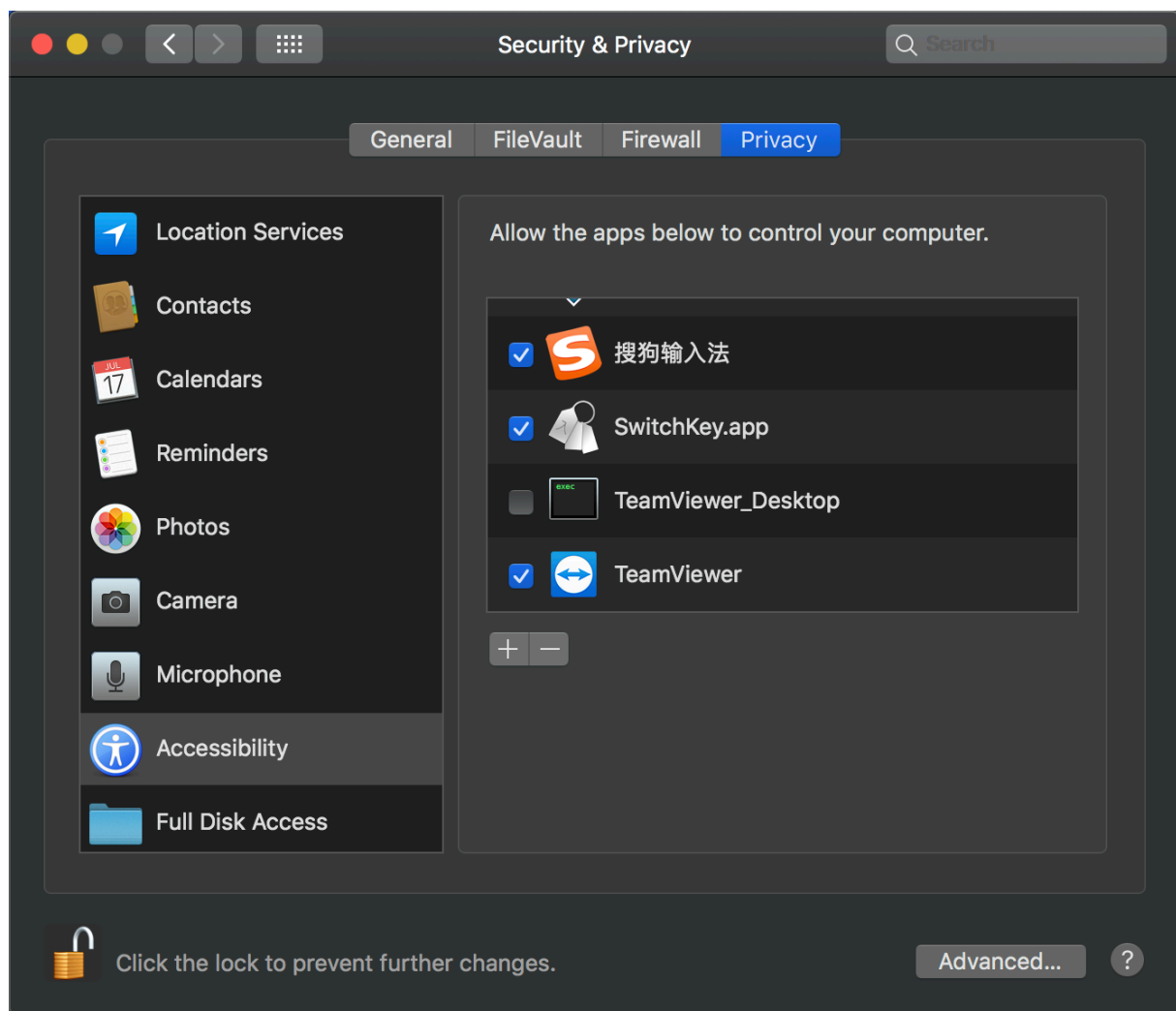
## First Run

Upon first launch, SwitchKey will ask for accessibility permission.

SwitchKey will open accessibility page, **and exit**.

After you grant permission, re-launch SwitchKey again.

The same will happen if you reject the permission later.



## Purchase

I wrote this because I tried some other tools.  
They are either buggy or too cumbersome to configure.  
I payed money and time for them.  
So you don't have to pay for them anymore.

## Bug Report & Feature Request

Welcome! Please click here.