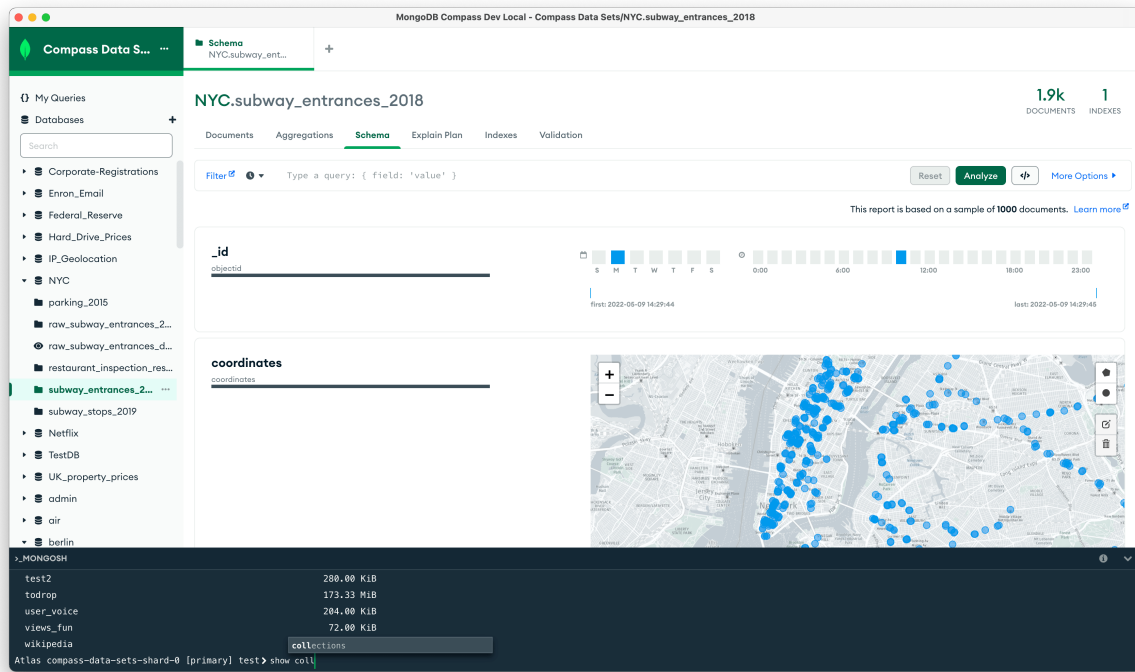


---

# MongoDB Compass Monorepo

This repository contains the source code and build tooling used in MongoDB Compass.



## Contributing

For contributing, please refer to CONTRIBUTING.md

For issues, please create a ticket in our JIRA Project.

Is there anything else you'd like to see in Compass? Let us know by submitting suggestions in our feedback forum.

## Packages Overview

- **mongodb-compass:** The MongoDB GUI

## Compass Plugins

- **@mongodb-js/compass-aggregations:** Compass Aggregation Pipeline Builder
- **@mongodb-js/compass-app-stores:** The external stores repo for compass

- 
- **@mongodb-js/compass-collection**: Compass Collection
  - **@mongodb-js/compass-crud**: Compass Plugin for CRUD Operations
  - **@mongodb-js/compass-database**: Compass Database Plugin
  - **@mongodb-js/compass-databases-collections**: View the list of, create, and drop databases and collections
  - **@mongodb-js/compass-explain-plan**: Evaluate the performance of your query
  - **@mongodb-js/compass-export-to-language**: Export MongoDB queries and aggregations to various languages
  - **@mongodb-js/compass-field-store**: FieldStore keeps track of available fields in a collection
  - **@mongodb-js/compass-find-in-page**: cmd-f UI for Compass
  - **@mongodb-js/compass-import-export**: Import/Export feature for Compass
  - **@mongodb-js/compass-indexes**: Collection index management for Compass
  - **@mongodb-js/compass-instance**: Compass instance plugin
  - **@mongodb-js/compass-query-bar**: Renders a component for executing MongoDB queries through a GUI
  - **@mongodb-js/compass-saved-aggregations-queries**: Instance tab plugin that shows saved queries and aggregations
  - **@mongodb-js/compass-schema**: Compass Schema Tab Plugin
  - **@mongodb-js/compass-schema-validation**: Compass plugin for document JSON schema validation
  - **@mongodb-js/compass-serverstats**: Compass Real Time
  - **@mongodb-js/compass-shell**: Compass Shell Plugin
  - **@mongodb-js/compass-sidebar**: The sidebar of Compass

## Shared Libraries and Build Tools

- **@mongodb-js/compass-components**: React Components used in Compass
- **@mongodb-js/compass-connection-import-export**: UI for Compass connection import/export
- **@mongodb-js/compass-connections**: Manage your MongoDB connections and connect in Compass
- **@mongodb-js/compass-connections-navigation**: Databases and collections sidebar navigation tree
- **@mongodb-js/compass-editor**: Reusable Compass editor component based on ace-editor with MongoDB-specific ace modes, themes, and autocompleters
- **@mongodb-js/compass-generative-ai**: Shared components and helpers for the generative ai aspects of Compass
- **@mongodb-js/compass-logging**: Shared helpers for logging in Compass packages

- 
- **@mongodb-js/compass-maybe-protect-connection-string**: Utility for protecting connection strings if requested
  - **@mongodb-js/compass-settings**: Settings for Compass
  - **@mongodb-js/compass-utils**: Utilities for MongoDB Compass Development
  - **@mongodb-js/compass-welcome**: The welcome modal
  - **@mongodb-js/connection-form**: A form for specifying information needed to connect to a MongoDB instance
  - **@mongodb-js/databases-collections-list**: List view for the databases and collections
  - **@mongodb-js/explain-plan-helper**: Explain plan utility methods for MongoDB Compass
  - **@mongodb-js/hadron-plugin-manager**: Hadron Plugin Manager
  - **@mongodb-js/ssh-tunnel**: Yet another ssh tunnel based on ssh2
  - **bson-transpilers**: Source to source compilers using ANTLR
  - **compass-e2e-tests**: E2E test suite for Compass app that follows smoke tests / feature testing matrix
  - **compass-preferences-model**: Compass preferences model
  - **electron-license**: Tools for electron apps to work with licenses
  - **hadron-app**: Hadron Application Singleton
  - **hadron-app-registry**: Hadron App Registry
  - **hadron-build**: Tooling for Hadron apps
  - **hadron-document**: Hadron Document
  - **hadron-ipc**: Simplified IPC for electron apps.
  - **hadron-type-checker**: Hadron Type Checker
  - **mongodb-collection-model**: MongoDB collection model
  - **mongodb-data-service**: MongoDB Data Service
  - **mongodb-database-model**: MongoDB database model
  - **mongodb-explain-compat**: Convert mongodb SBE explain output to 4.4 explain output
  - **mongodb-instance-model**: MongoDB instance model

## Shared Configuration Files

- **@mongodb-js/eslint-config-compass**: Shared Compass eslint configuration
- **@mongodb-js/eslint-plugin-compass**: Custom eslint rules for Compass monorepo
- **@mongodb-js/mocha-config-compass**: Shared mocha mocha configuration for Compass packages
- **@mongodb-js/prettier-config-compass**: Shared Compass prettier configuration
- **@mongodb-js/tsconfig-compass**: Shared Compass Typescript configuration
- **@mongodb-js/webpack-config-compass**: Shared webpack configuration for Compass application and plugins

---

## License

SSPL