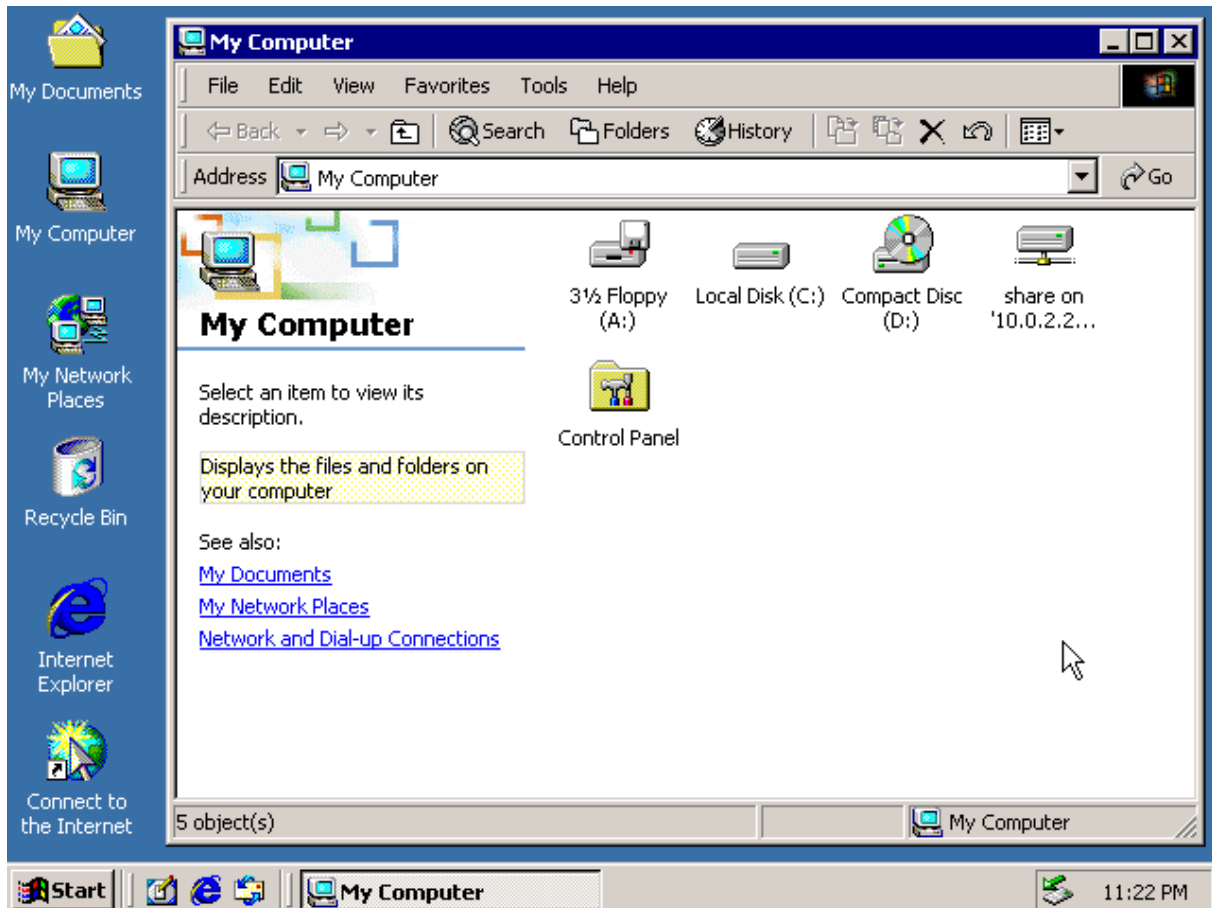


---

## Windows 2000 on Docker

A Docker image for Windows 2000 Advanced Server with SP4.



### Start an instance

```
1 docker run --detach \  
2   --name qemu-win2000 \  
3   --device /dev/kvm \  
4   --publish 127.0.0.1:3389:3389/tcp \  
5   --publish 127.0.0.1:5900:5900/tcp \  
6   --publish 127.0.0.1:6080:6080/tcp \  
7   docker.io/hectorm/qemu-win2000:latest
```

The instance can be accessed from: \* **RDP** (3389/TCP), user `Administrator`, password `password`. \* **VNC** (5900/TCP), without password. \* **noVNC** (6080/TCP), `http://127.0.0.1:6080/vnc.html`  
\* `docker exec -it qemu-win2000 vmshell`

---

Additionally the contents of the `/mnt/` directory in the container will be exposed on the `Z:` drive via SMB.

## Environment variables

**VM\_CPU** Number of cores the VM is permitted to use (2 by default).

**VM\_RAM** Amount of memory the VM is permitted to use (512M by default).

**VM\_KEYBOARD** VM keyboard layout (`en-us` by default).

**VM\_KVM** Start QEMU in KVM mode (`true` by default). > The `--device /dev/kvm` option is required for this variable to take effect.

## Why?

“Your scientists were so preoccupied with whether or not they could, that they didn’t stop to think if they should.”

Dr. Ian Malcolm

## Disclaimer

This project is not affiliated with and has not been approved by Microsoft. The Windows 2000 Advanced Server disk image used in this demonstration has been obtained from WinWorld and it is published for digital preservation and demonstration purposes only.

## License

See the license file.